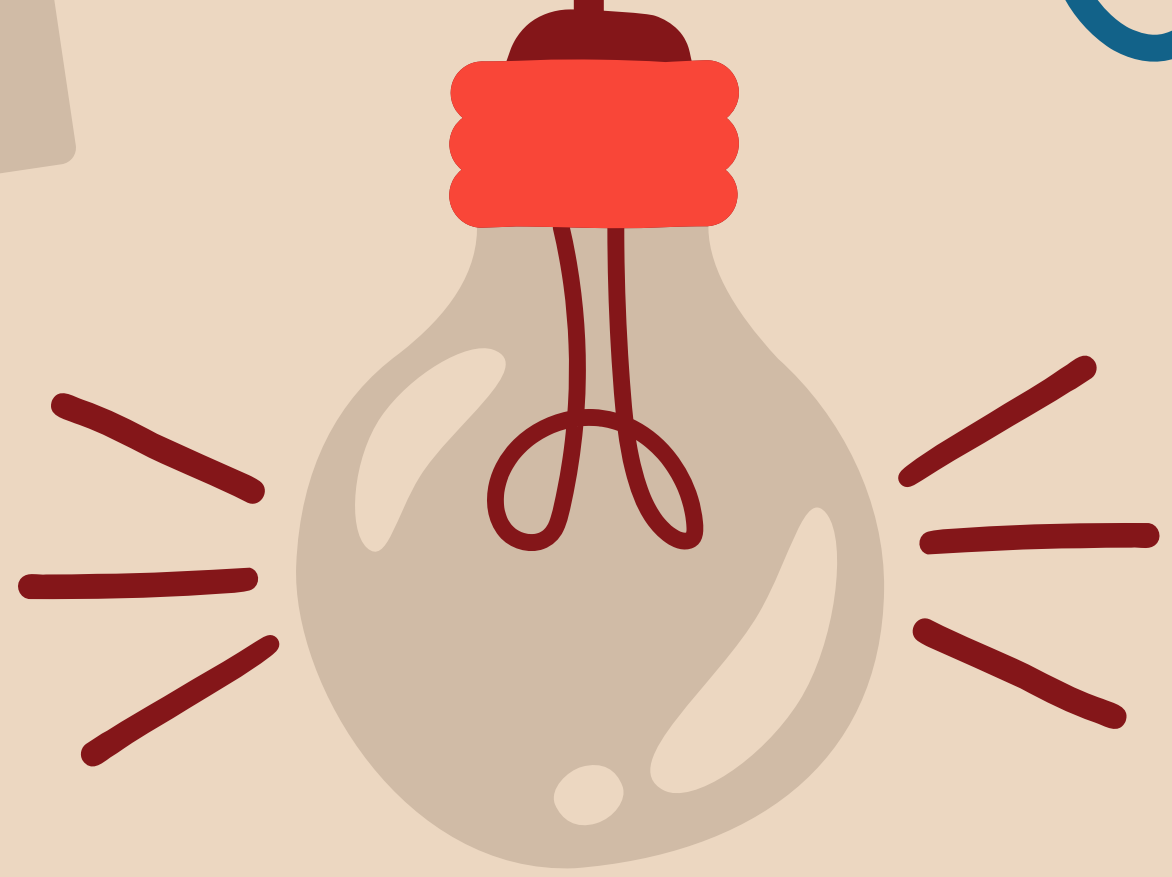
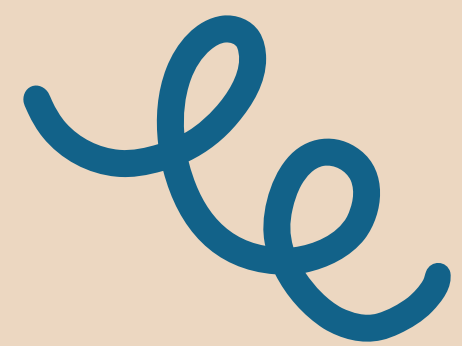
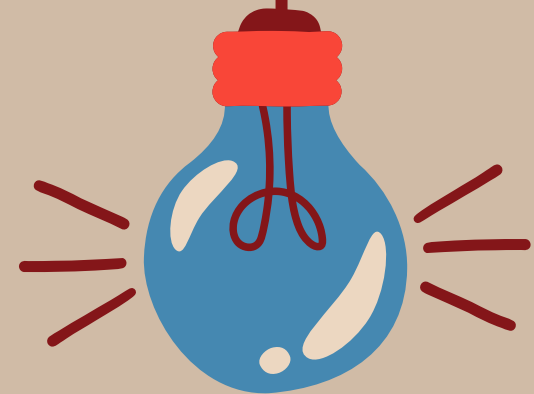




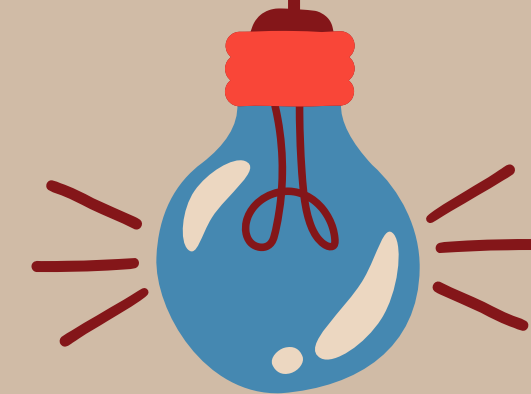
**ADVISOR SUCCESS**

**DAY**





# CONTENTS



**1** Introduction

**2** The team

**3** HOSA Heros

**4** Make Your Life Easier

**5** App Reveal

**6** Speed Dating



# INTRODUCTION



:

Board  
Staff



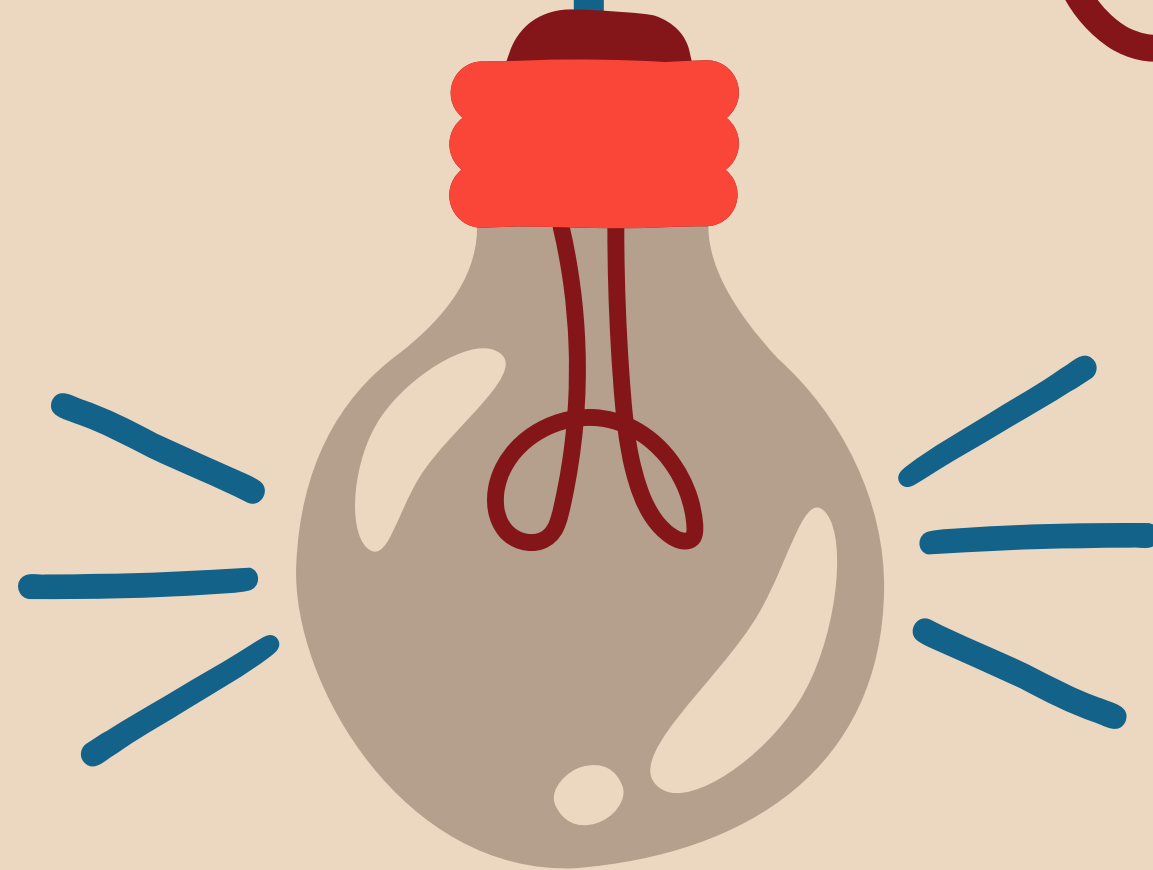


# WHATS NEW

## AROUND

## HERE

FLC Grant money  
BioRad Workshop  
Phlebotomy Workshop  
New Chapter Manual  
New GA HOSA Address



# Phlebotomy Competition

Sponsored by AMT



## **Exciting Opportunity to Bring Phlebotomy Skills Learning to Students Through Competitive Event**

As a leader in health science education, you know that phlebotomy skills can open the door to entry level jobs in health care. Now students have another incentive to gain learning and hands-on experience: AMT has partnered with **HOSA** to sponsor this new initiative.

### **The **HOSA** Phlebotomy Competitive Event**

To help educators bring this learning opportunity to their students and help them excel in the **HOSA** competition, AMT has launched a full set of practice and study resources. The competition is slated for the 2024 **HOSA** International Leadership Conference with preliminaries kicking off this September.

# HOSA ADVISOR BIOTECHNOLOGY COMPETITIVE EVENT WORKSHOP

WITH **BIO-RAD**

LOCATION:

**GEORGIA BIO™  
EQUIPMENT  
DEPOT**

5002 NORTH ROYAL ATLANTA  
DR. IN TUCKER

**SATURDAY OCT 14TH  
12:00 PM TO 2:00 PM**  
with the option to stay  
for "shopping" after  
the workshop

Learn about the HOSA Biotechnology competitive events, Protein assay and ELISA, in this hands-on workshop with instructor Elizabeth Proctor (Bio-Rad fellow and former HOSA Advisor). Participants will receive a set of ELISA reagents to take back to their school for student practice, plus there will be a raffle for one Got Protein kit to be shipped directly to a school.

**REGISTER NOW**

Questions? Email Megan Heaphy [mheaphy@cghi.org](mailto:mheaphy@cghi.org)

SPONSORED BY **GEORGIA BIO™**  
The Life Sciences Partnership



# CONFERENCE TIPS



## • PAYING FOR CONFERENCE

- Fundraising
- Where to send money to

## • TRAVELING

- Make sure that you have requested transportation
- Fill out all appropriate county level request forms
- Make sure your students complete the advisor participation form

## • WHO TO BRING

- Focus on your most active students. Many students want to attend overnight trips however, those who don't participate any other time are the ones most likely to cause you trouble on away trips

## • HOW TO GET THE MOST VALUE

- Attend all General Sessions
- Work a CE
- Make sure your students are prepared



# SOME SUGGESTIONS FROM HQ



## WHEN PAYING

Include an invoice with your payment

## STUDENT EMAILS

Have students create HOSA use only gmails

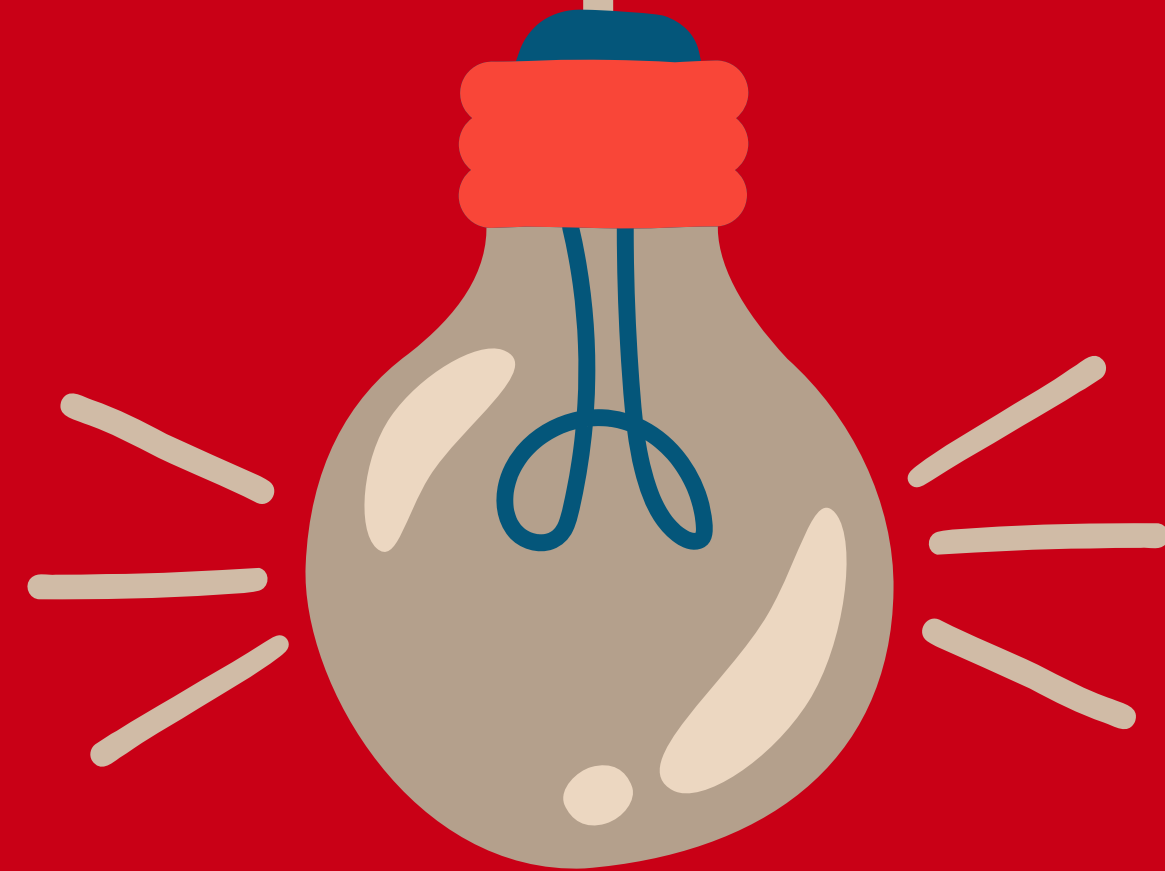
## WHERE IS MY REGION ?

On your device, Go to [GeorgiaHOSA.org](https://GeorgiaHOSA.org) > Click on the Resource Tab > Click on Chapter Management Guide from Drop down menu > Click on Region Map > Find your county.





THANK  
YOU



Questions Welcome!